

Macintosh OS 10.4/10.3/10.2

Configuring Your Network Settings for a Wireless Ethernet Connection

Before you begin, exit all programs and close all windows.

Make sure your wireless Ethernet card is properly installed and recognized.

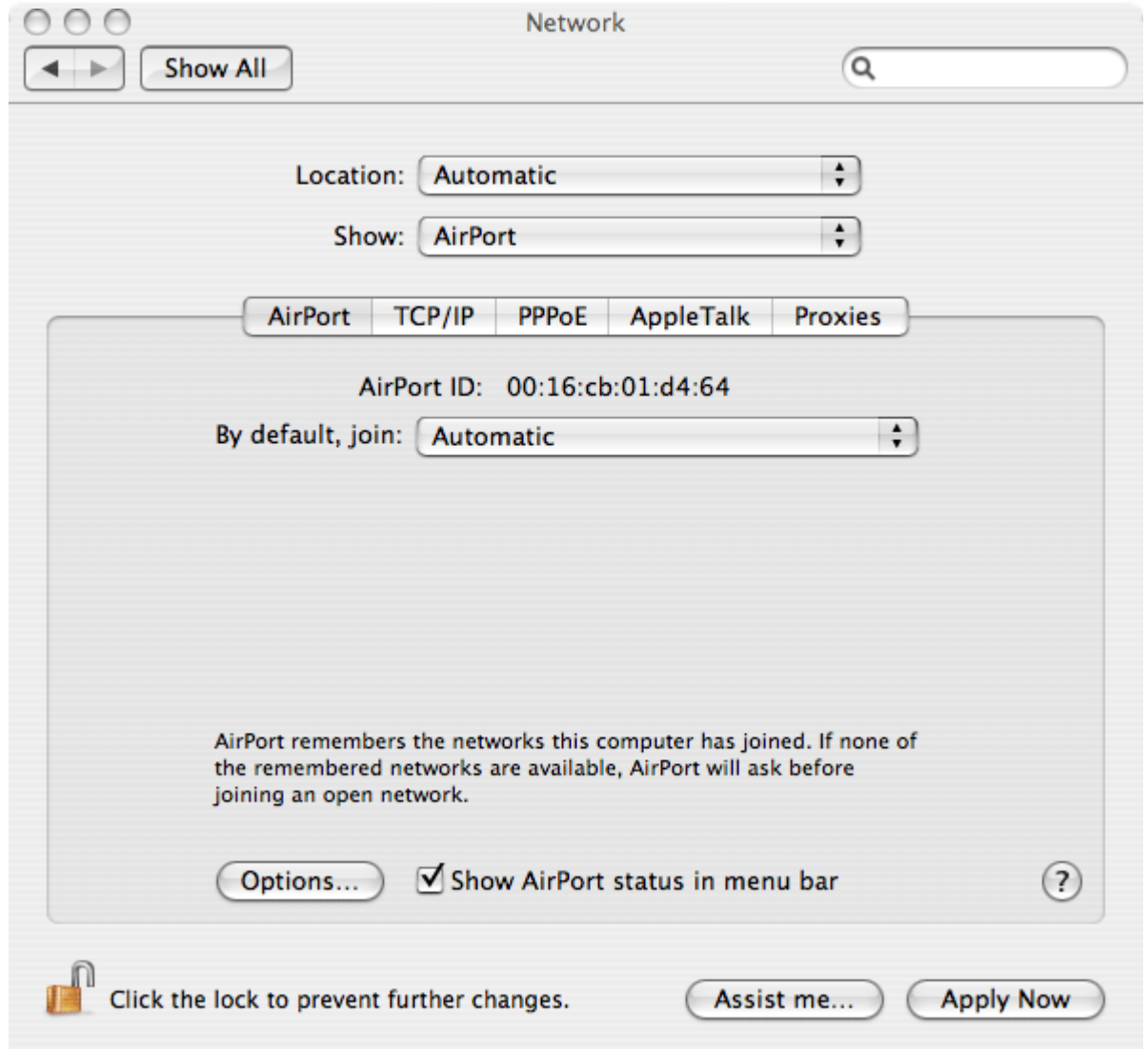
1. If you are using an Apple AirPort card, install the card as described in the user manual that came with your computer.
2. Computers that support the Apple AirPort card will come with Apple's AirPort software pre-installed.
3. In all most all instances the wireless network SSID or wireless identifier should be automatically detected by the Apple software.
4. In this document you will see reference to the text **Library SSID**. This will represent the unique wireless broadcast signal for the public library you are visiting. This identifier should be displayed on various table tents and literature throughout the library. If you are unable to determine the libraries identifier, please see assistance from library personnel.

If you have OS 10.4:

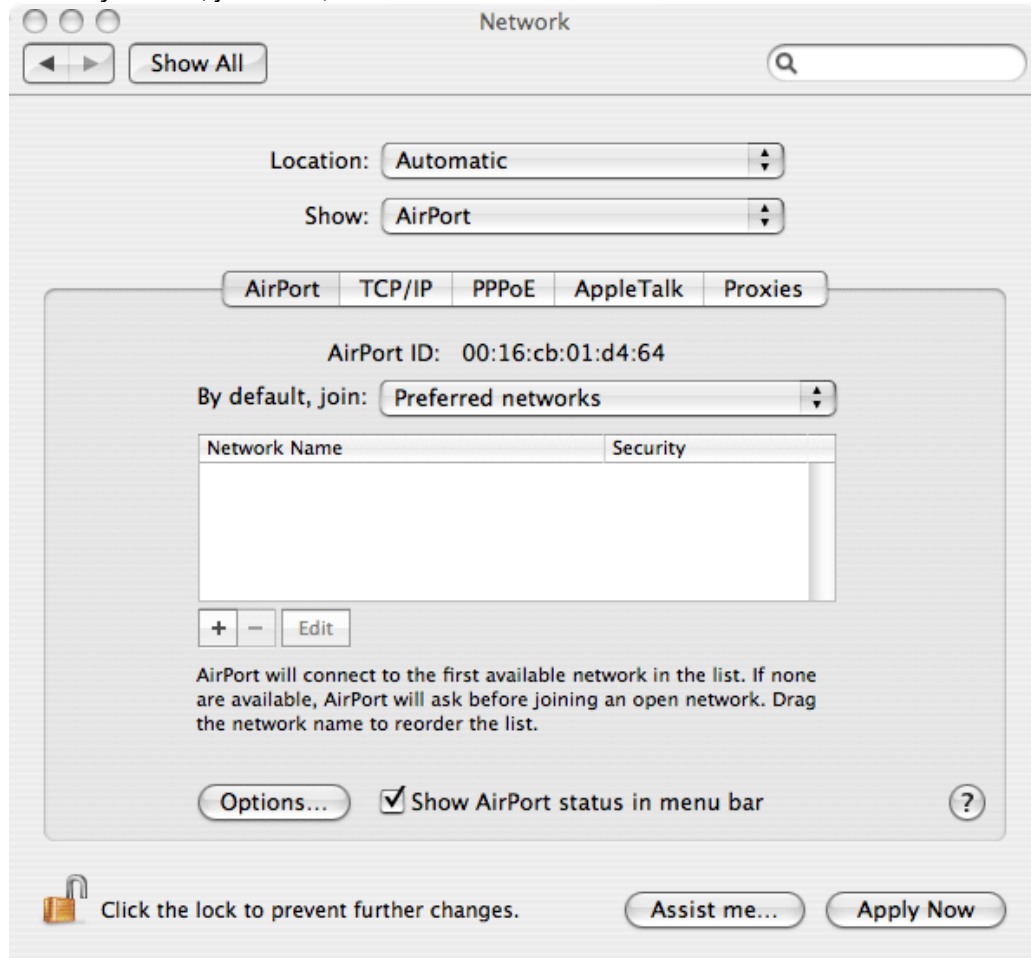
1. From the **Apple** menu, select **System Preferences**.
2. Click the **Network** icon.



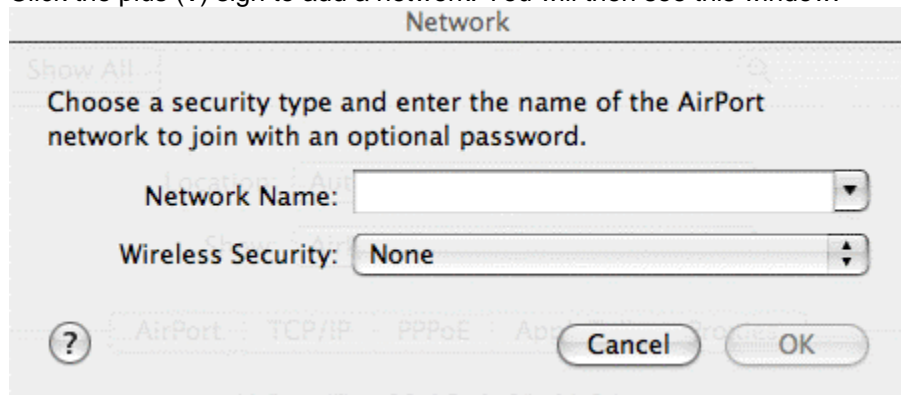
3. In the *Show:* field, make sure that **Airport** is selected




4. In the *By default, join:* field, select **Preferred Networks**.



5. Click the plus (+) sign to add a network. You will then see this window:



Type "**Library SSID**" in the *Network Name:* field and click **OK**.

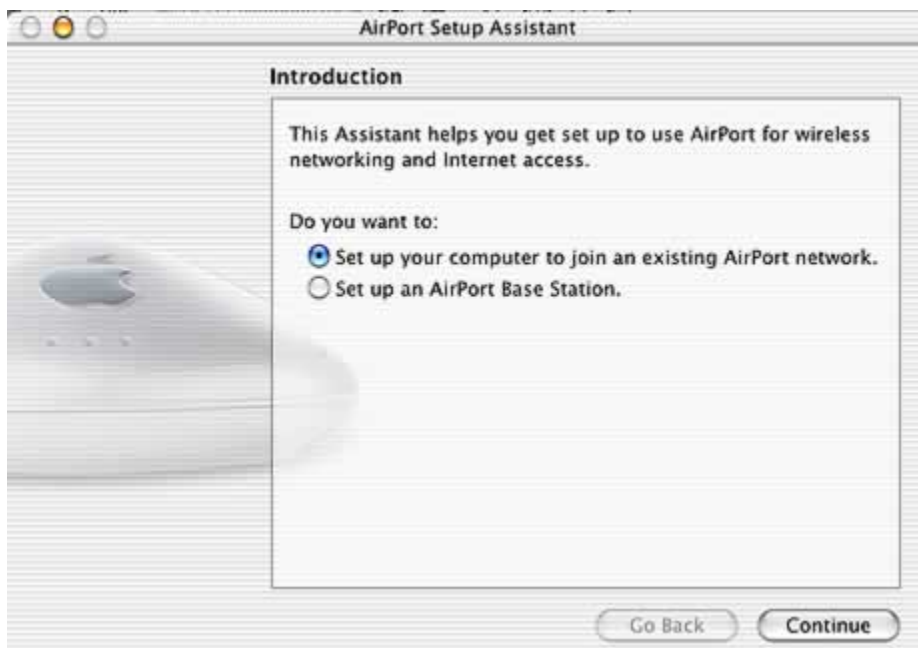
6. Click **Apply Now**.
7. The airport signal  on the top right corner of your window should now show connectivity and you should be able to use a web browser, e-mail or any other application that requires a network connection.

If you have OS 10.3/10.2:

1. Go to **Macintosh HD>Applications>Utilities>AirPort Setup Assistant** and open up the Setup Assistant.



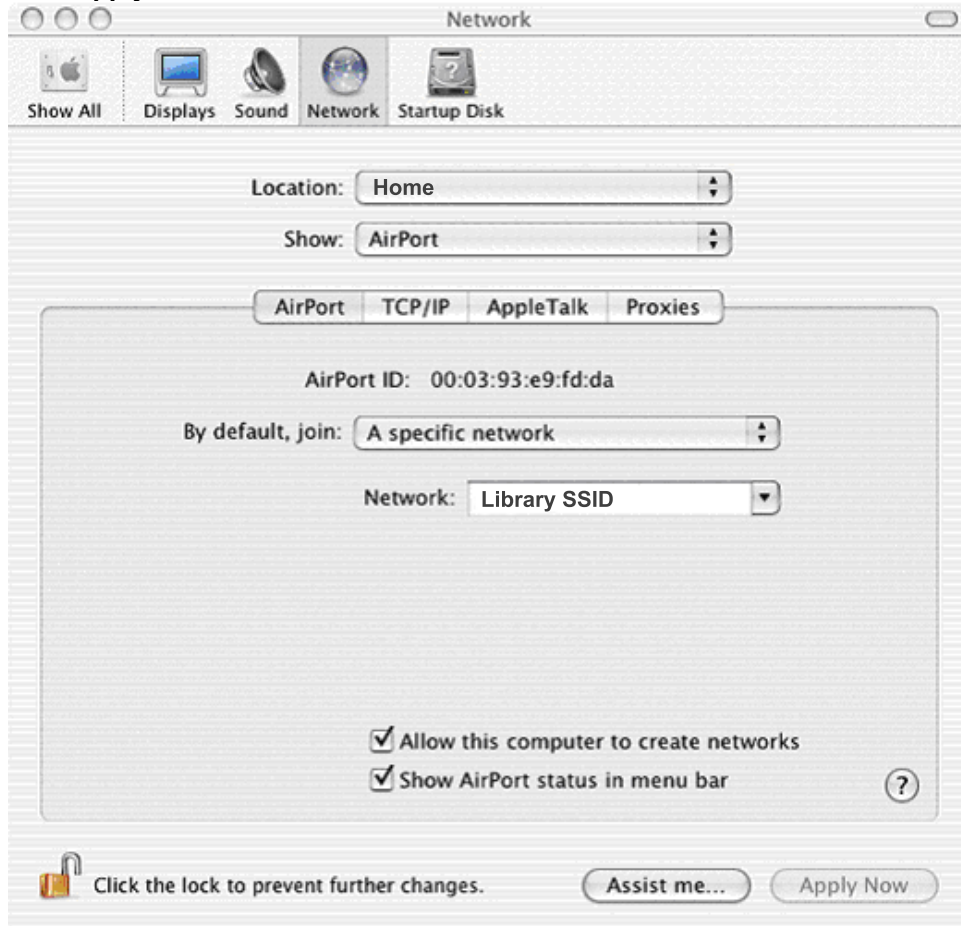
2. Make sure "Set up your computer to join an existing AirPort Network" is selected and click **Continue**.



3. The next screen should say that it is ready to configure your computer to access the network "**Library SSID**". If it does, click **Continue**.

If it does not, and instead says "No Networks found," then do the following:

- From the **Airport Setup Assistant** menu, choose **Quit Airport Setup Assistant**.
- From the **Apple** menu, select **System Preferences**.
- Click on the **Network** icon.
- In the *Show:* field, make sure that **Airport** is selected.
- In the *By default, join:* field, select **A Specific Network**.
- Type "**Library SSID**" in the *Network:* field.
- Click **Apply Now**.



- Close the Network window and proceed to step 5.

4. When the next screen appears click **Done**.
5. You should now be able to use a web browser, e-mail or any other application that requires a network connection.