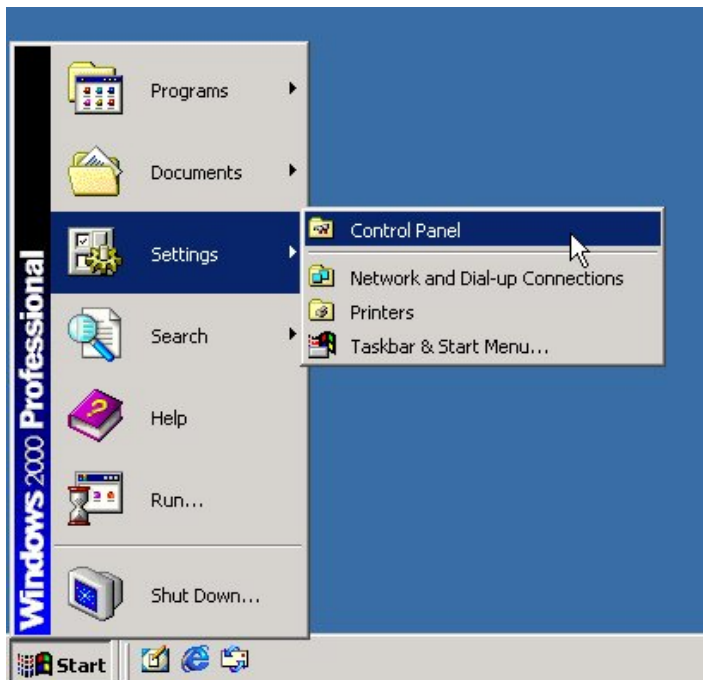


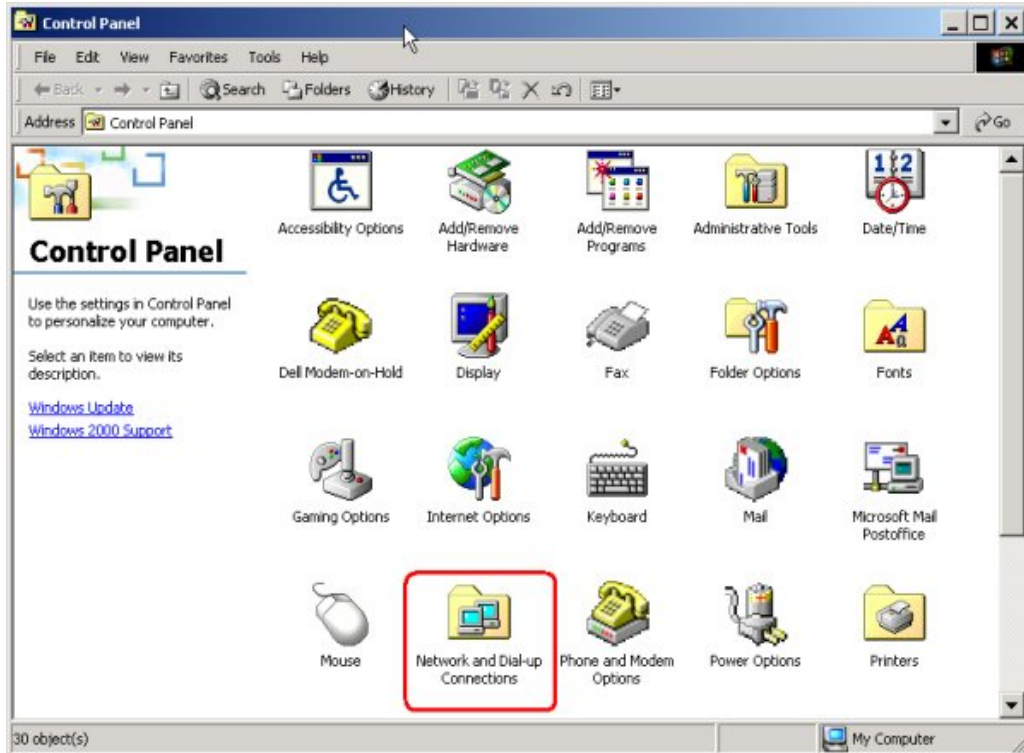
Windows 2000 Wireless Network Settings

SSID or ESSID	Palmyra Public Library (case sensitive)
WEP	None or Disabled
802.1x Authentication	Off or Disabled
Speed	Auto
Channel	Auto

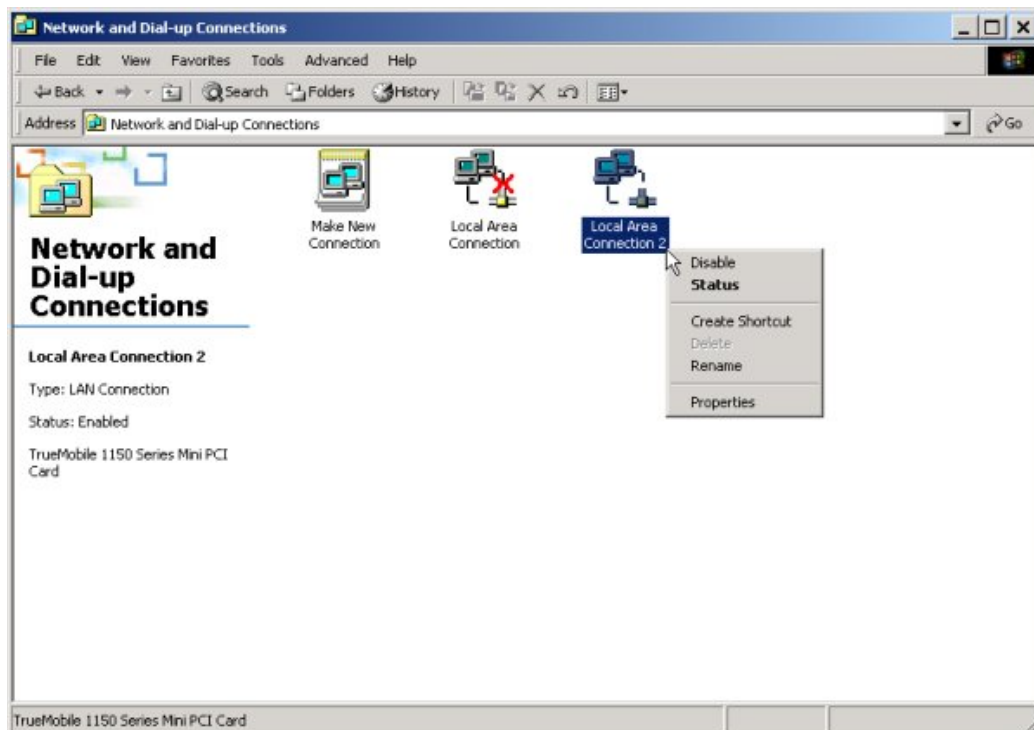
1. Click Start, proceed to the Control Panel



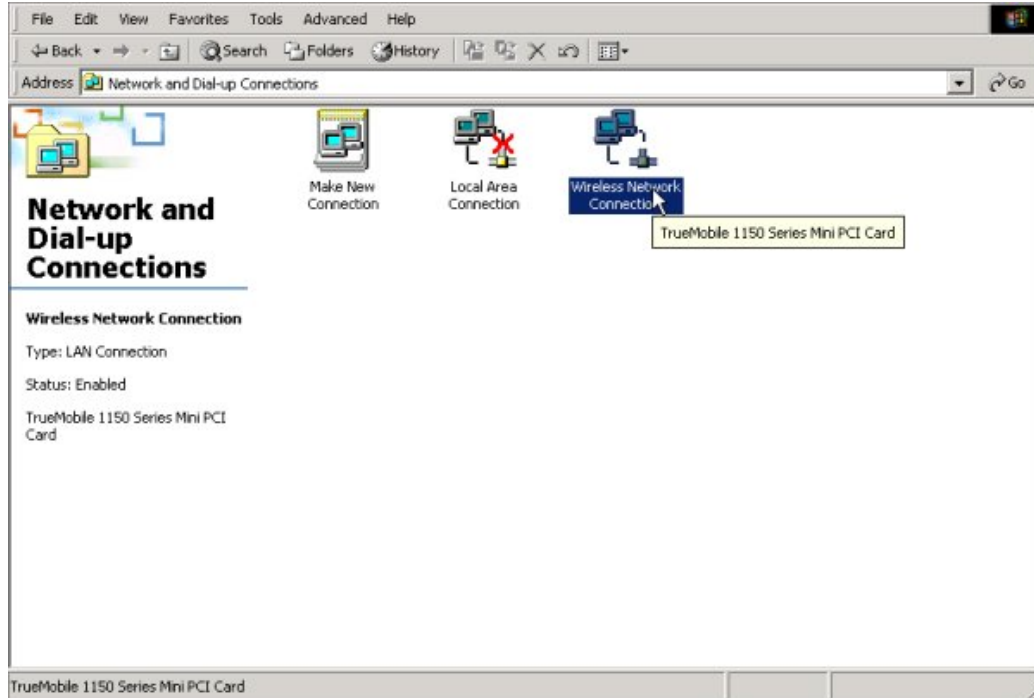
2. Click on the Network and Dial-up Connections icon.



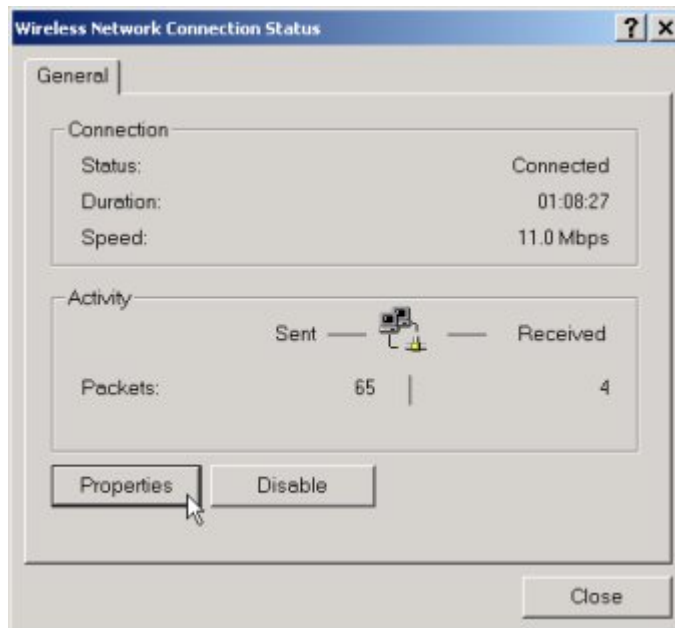
3. Right click on the connection for your Wireless adapter (pausing the mouse over the LAN connection will display the name of your wireless adapter). Select Rename and change the name of your card to **"Wireless Network Connection"**



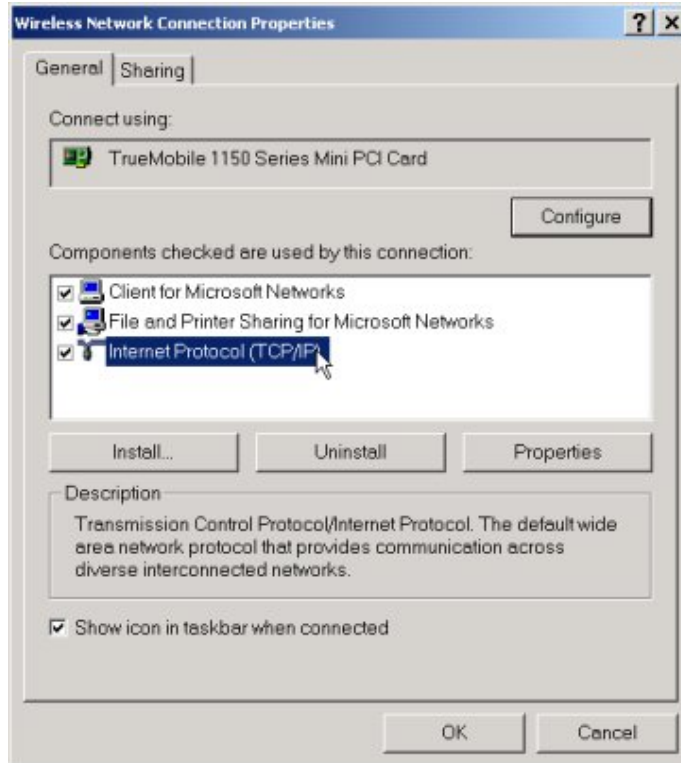
4. Double click on the renamed connection.



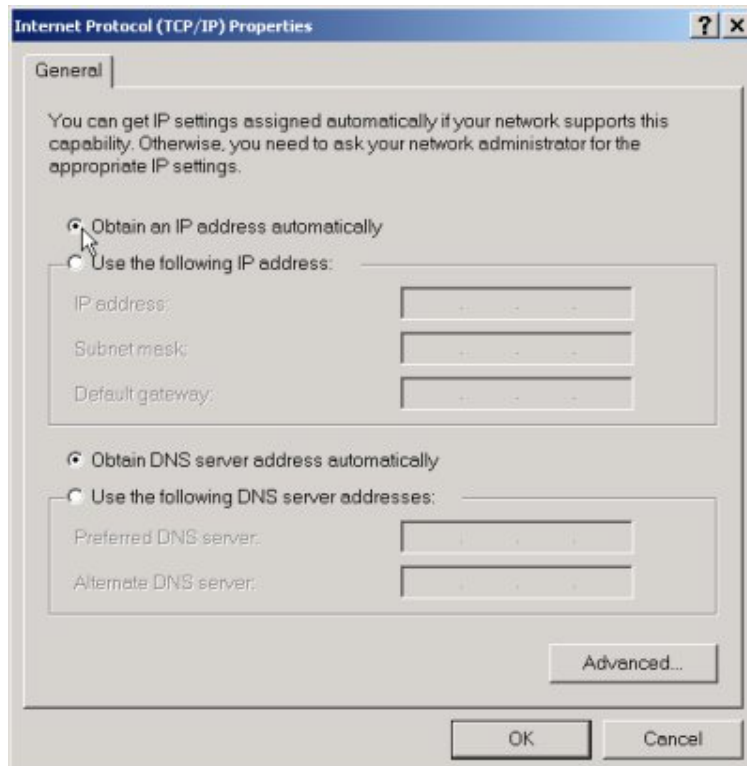
5. Click on the Properties button.



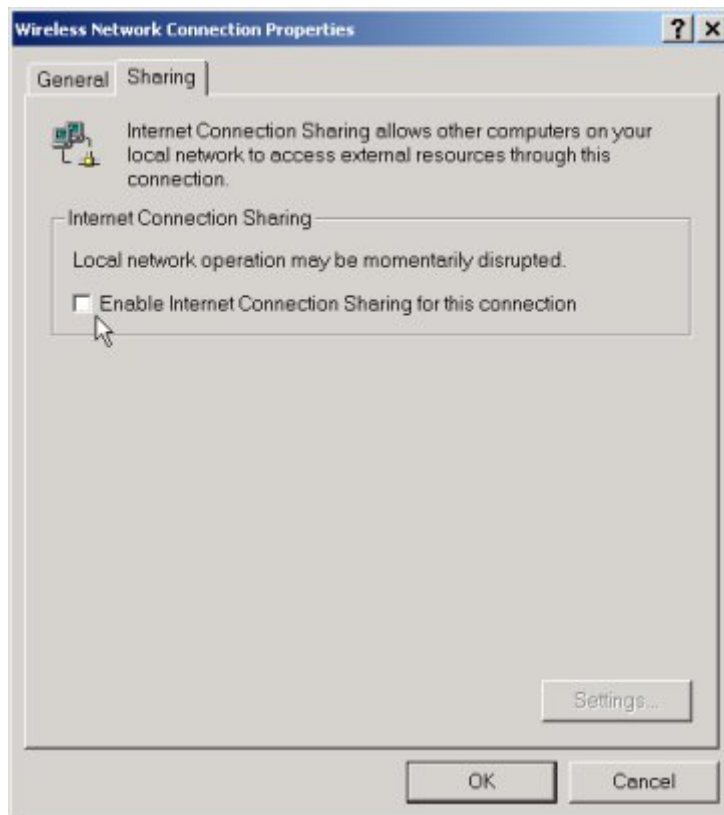
6. Double click on TCP/IP Properties.



7. Ensure that “Obtain and IP address automatically” and “Obtain DNS server address automatically” is selected. Then click OK.



8. If your computer shows a "Sharing" tab, ensure that "Enable Internet Connection Sharing for this connection" is unchecked. If your computer does not show this tab, skip this step.



9. Check your Internet connectivity by using your preferred web browser such as Internet Explorer.