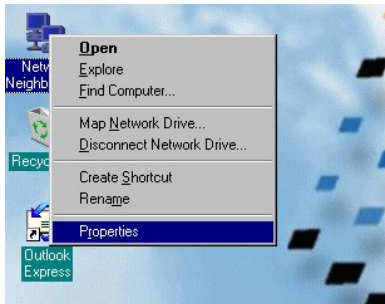


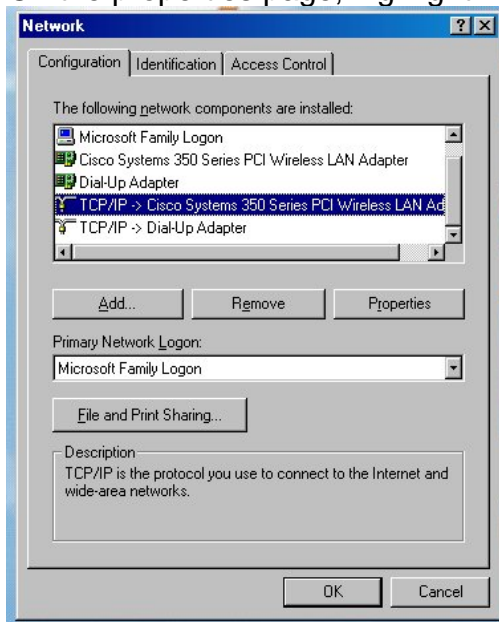
Windows 98/ME Wireless Network Settings

SSID or ESSID	Palmyra Public Library (case sensitive)
WEP	None or Disabled
802.1x Authentication	Off or Disabled
Speed	Auto
Channel	Auto

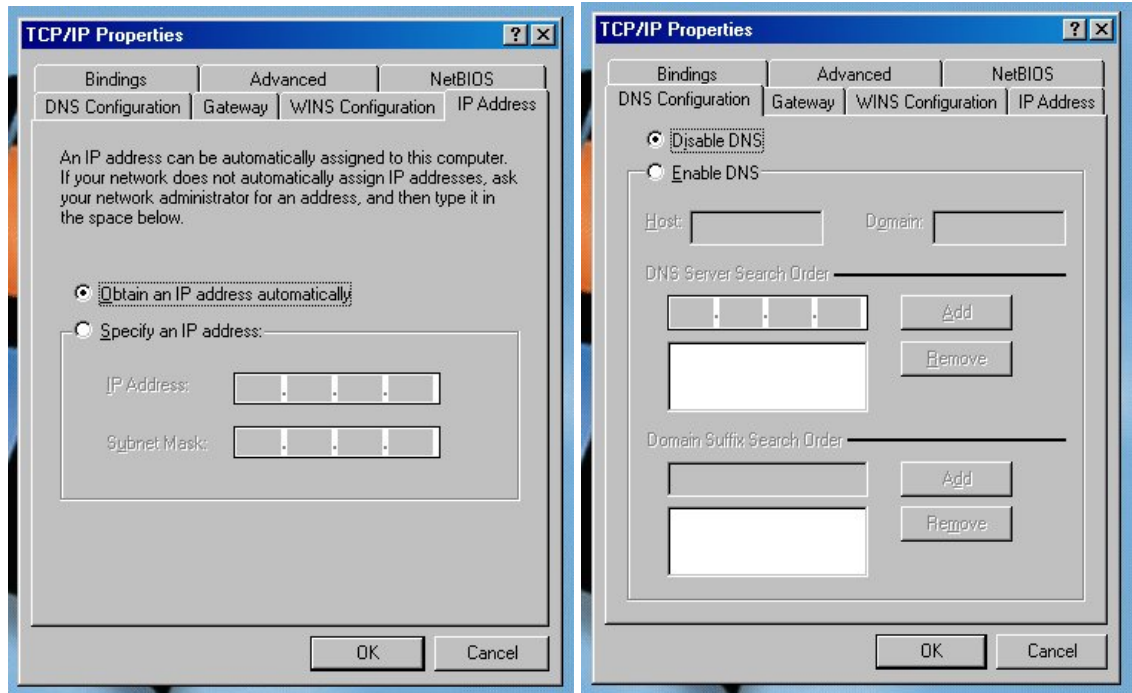
1. First, ensure that your wireless network card is correctly installed, go to control panel, then system and select the Device Manager tab. Browse down the list to Network Adapters and ensure that your wireless card is listed, and has no errors.
2. After you have verified that your adapter is listed and functioning, close Device Manager and right click on 'Network Neighborhood' on the desktop and select 'Properties'.



3. On the properties page, highlight TCP/IP -> "wireless card" and click Properties.



4. On the IP Address Tab, ensure that 'Obtain an IP address automatically' is selected. On the DNS Server tab, ensure that the selection 'Disable DNS' is selected.



NOTE:	DNS information should be obtained through DHCP. If you are not able to get to web sites, you may need to enter the DNS information above.
DNS Information:	Click on the radio button for 'Enable DNS'. For the host, you can use pc1 or laptop1. The domain can be pa.net. Click on the 'Add' button for DNS Server Search Order. The first entry should be 205.166.61.160 and the next entry is 205.166.61.140. Click the OK button and reboot your PC.

5. The remaining configuration for this connection must be done using the client adapter software that shipped with your wireless LAN card.
6. The changes that need to be made in order to connect to the wireless network are as follows:
 - a. The SSID needs to be set to Palmyra Public Library (case sensitive).
 - b. The network type is Ad-hoc.
 - c. Access Point Authentication needs to be set to Open Authentication.
 - d. WEP is not required.
 - e. When you have made these changes, apply them and reboot your PC.
7. Check your Internet connectivity by using your preferred web browser such as Internet Explorer.