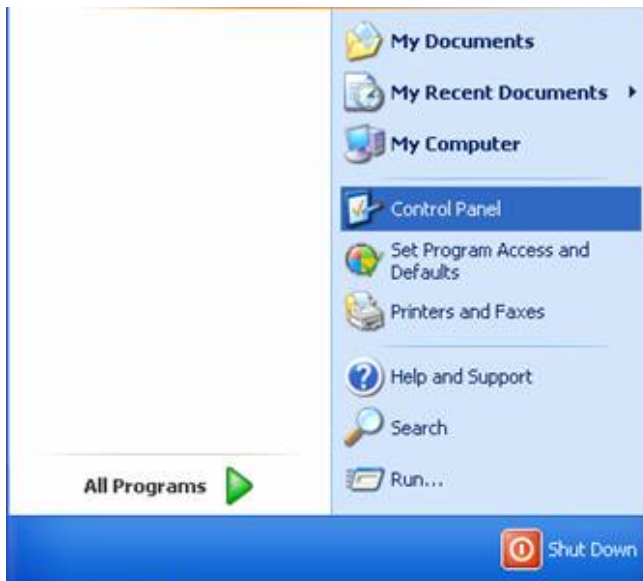


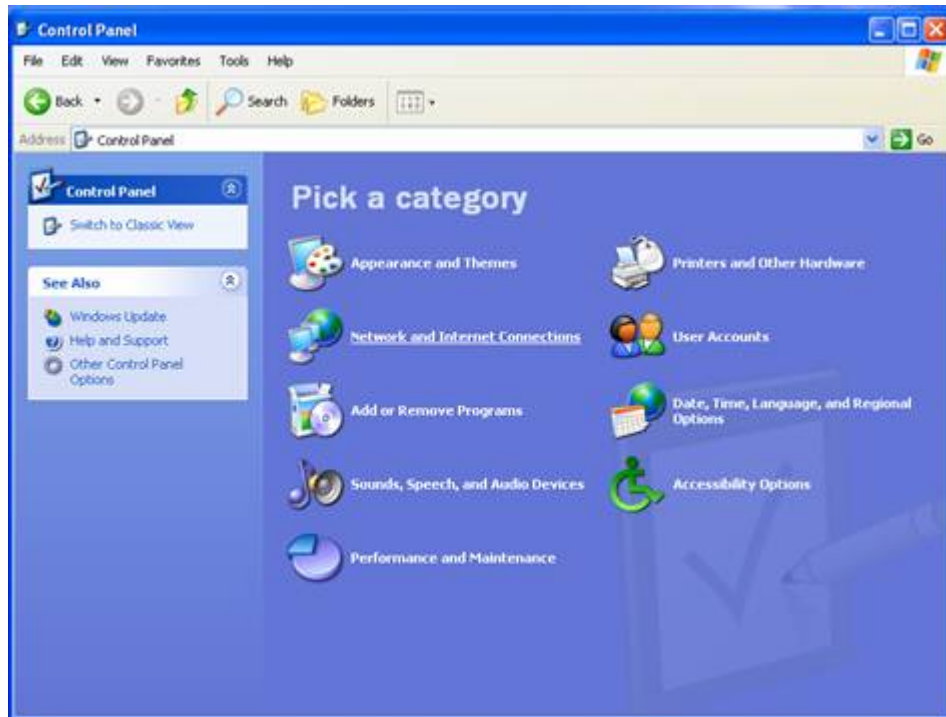
# Windows XP Wireless Network Settings

<b>SSID or ESSID</b>	Palmyra Public Library (case sensitive)
<b>WEP</b>	None or Disabled
<b>802.1x Authentication</b>	Off or Disabled
<b>Speed</b>	Auto
<b>Channel</b>	Auto

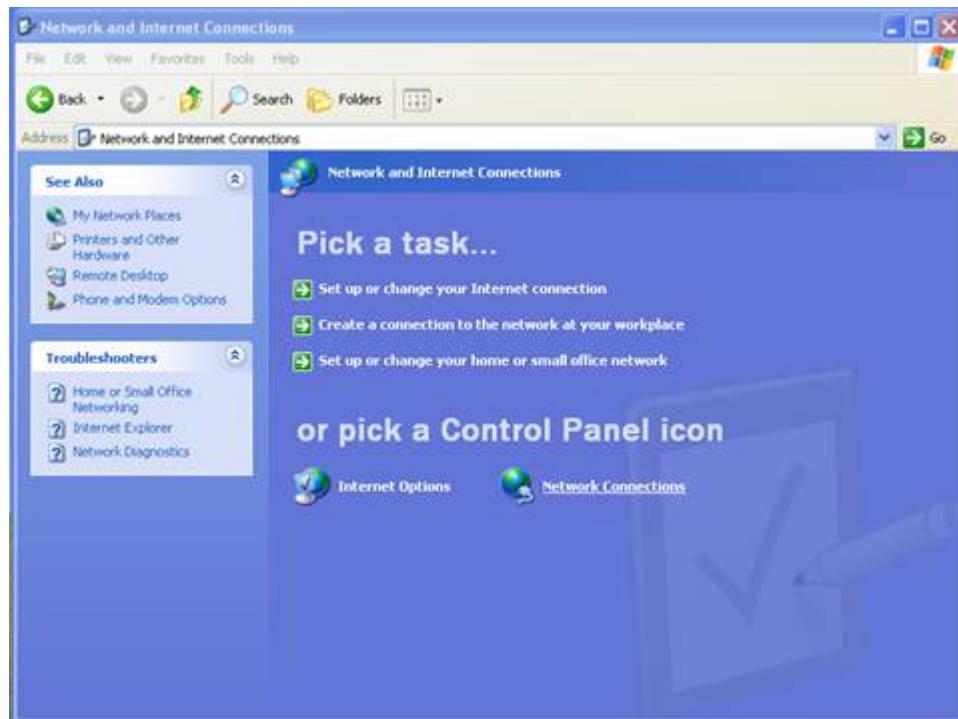
1. Click Start, proceed to the Control Panel



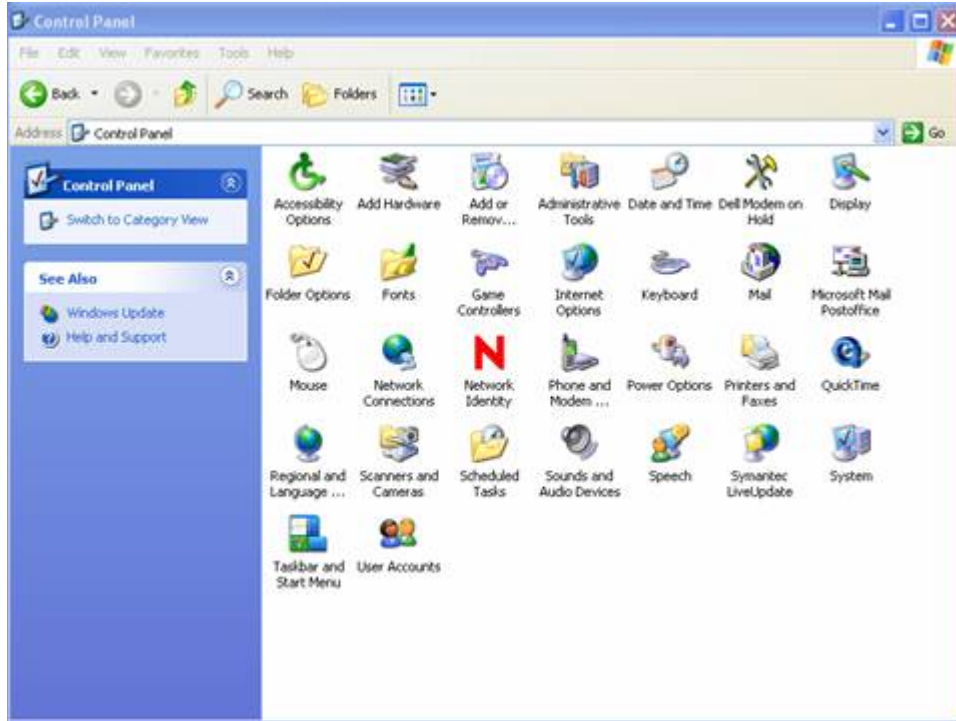
2. If your Control Panel is in the Classic View continue to Step 4. If your Control Panel is in Category View, click on the Network and Internet Connections icon.



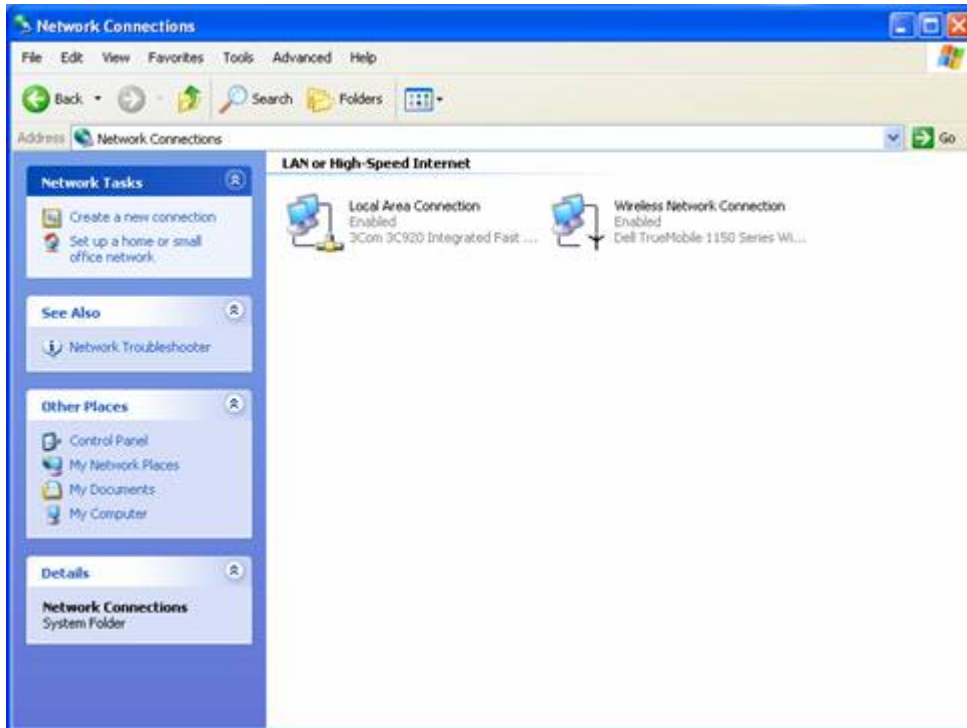
3. At the bottom, click on the Network Connections icon. Continue to Step 5.



4. Click on the Network Connections icon.



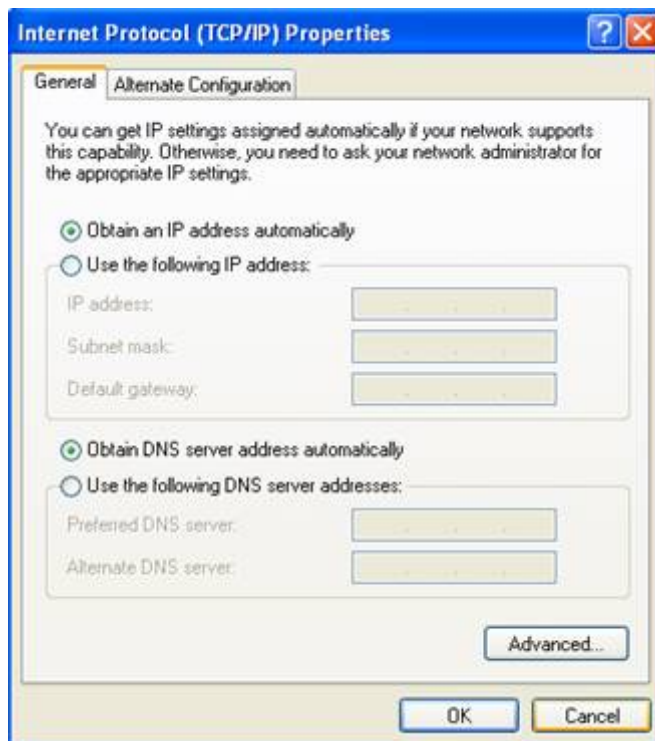
5. Double click on the Wireless Network Connection.



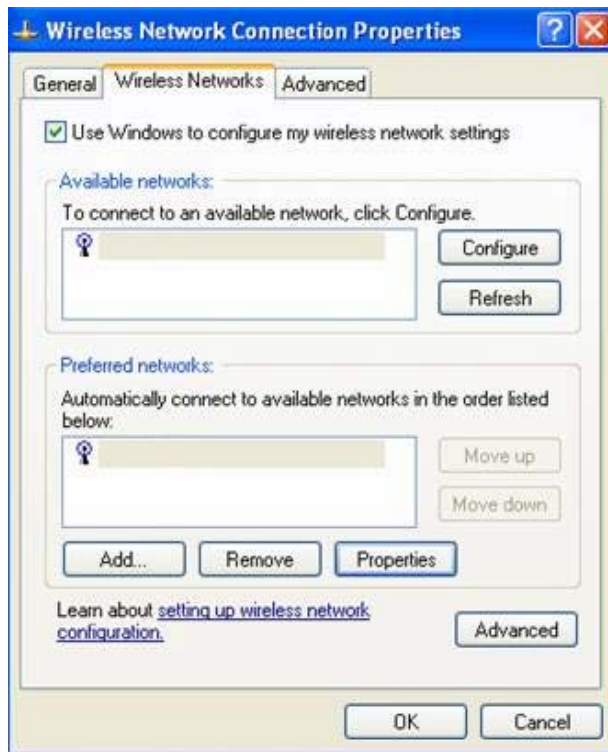
6. Double click on TCP/IP Properties.



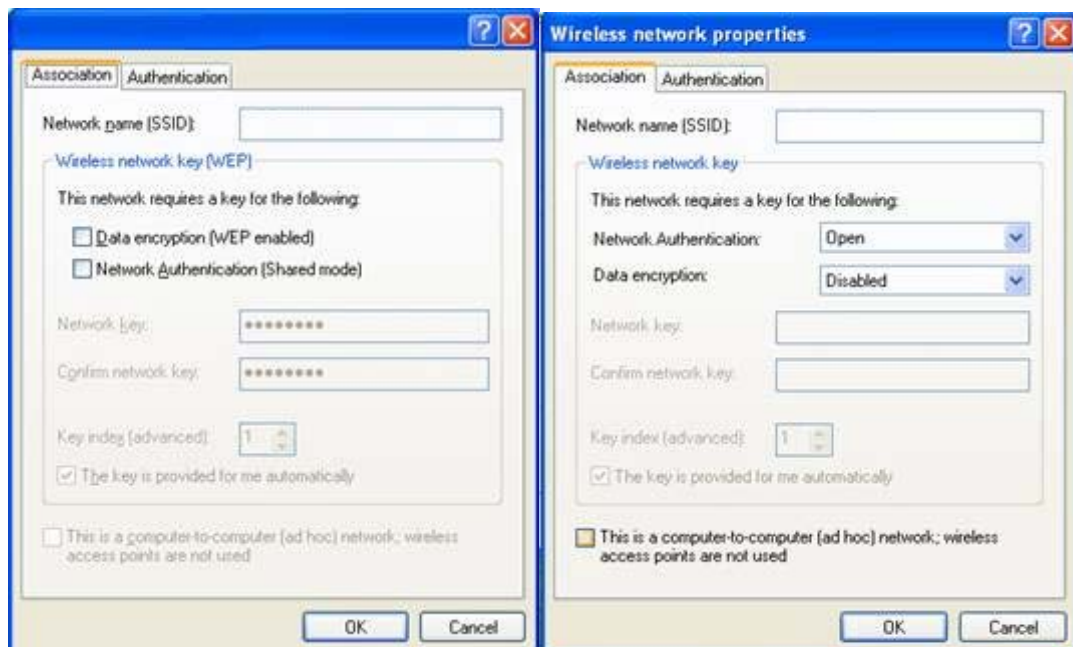
7. Ensure that “Obtain and IP address automatically” and “Obtain DNS server address automatically” is selected. Then click OK.



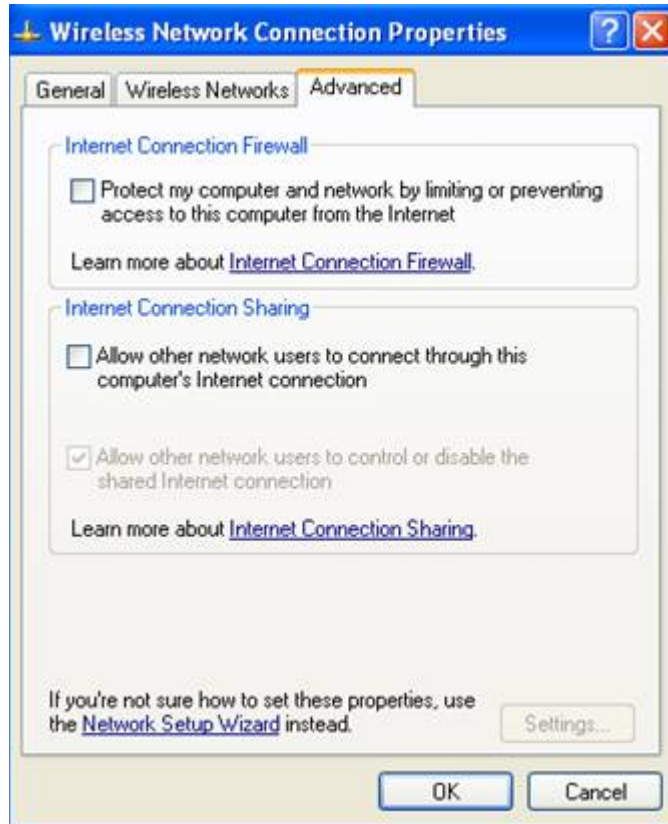
8. Select the Wireless Networks tab on the Wireless Network Connection Properties Window. Select Amelia S Givin Free Library from the list of Available network and click the Configure button.



9. You could be presented with one of two screens. If you are presented with the first screen, ensure that “Data encryption (WEP enabled)” and “Network Authentication (Shared mode)” are both unchecked. If you have the second screen, ensure that “Network Authentication” is set to Open, and “Data encryption” is set to disabled. Click Ok to save and close the Properties Window.



10. Select the Advanced tab of the Wireless Network Connection Properties window. Ensure that the “Internet Connection Firewall” and “Internet Connection Sharing” boxes are unchecked. Click OK to save and close the Properties window.



11. Check your Internet connectivity by using your preferred web browser such as Internet Explorer.